

The Young People's Fund

Violence Affecting Young People with
Leah Uwaibi

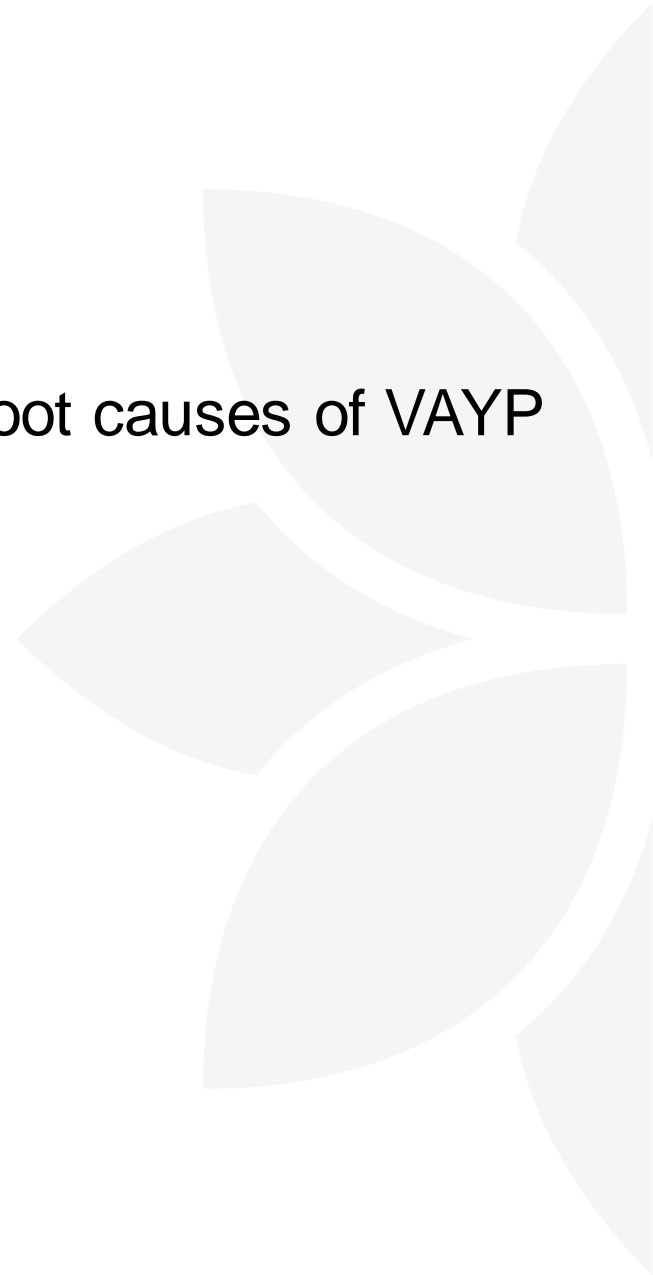
Q&A with Harriette Tillott (LCF), Sabrina
Cleary (Peabody) & Sarah Morton (Peabody)

7th September 2021



Agenda

1. Welcome
2. Adverse childhood experiences and root causes of VAYP
3. Round table discussions
4. Questions and answers



Purpose

1. To further understanding of the causes of violence affecting young people and effective responses
2. To increase and improve the support offered by Peabody to partners and applicants of our grant funding
3. To understand if there is appetite from grant applicants/recipients to be part of a network that shares knowledge/lessons learned/peer support
4. To answer any further questions on The Young People's Fund



Violence Affecting Young People (VAYP)

Leah Uwaibi

WARNING

Introduction

This presentation is based on the findings of a systematic review.

Exploring the question- Aces (Adverse Childhood Experience) and the influence this has on young people becoming youth offenders.

Focused on original sampling across YOI's in the UK and juvenile prisons in the USA and a residential home.

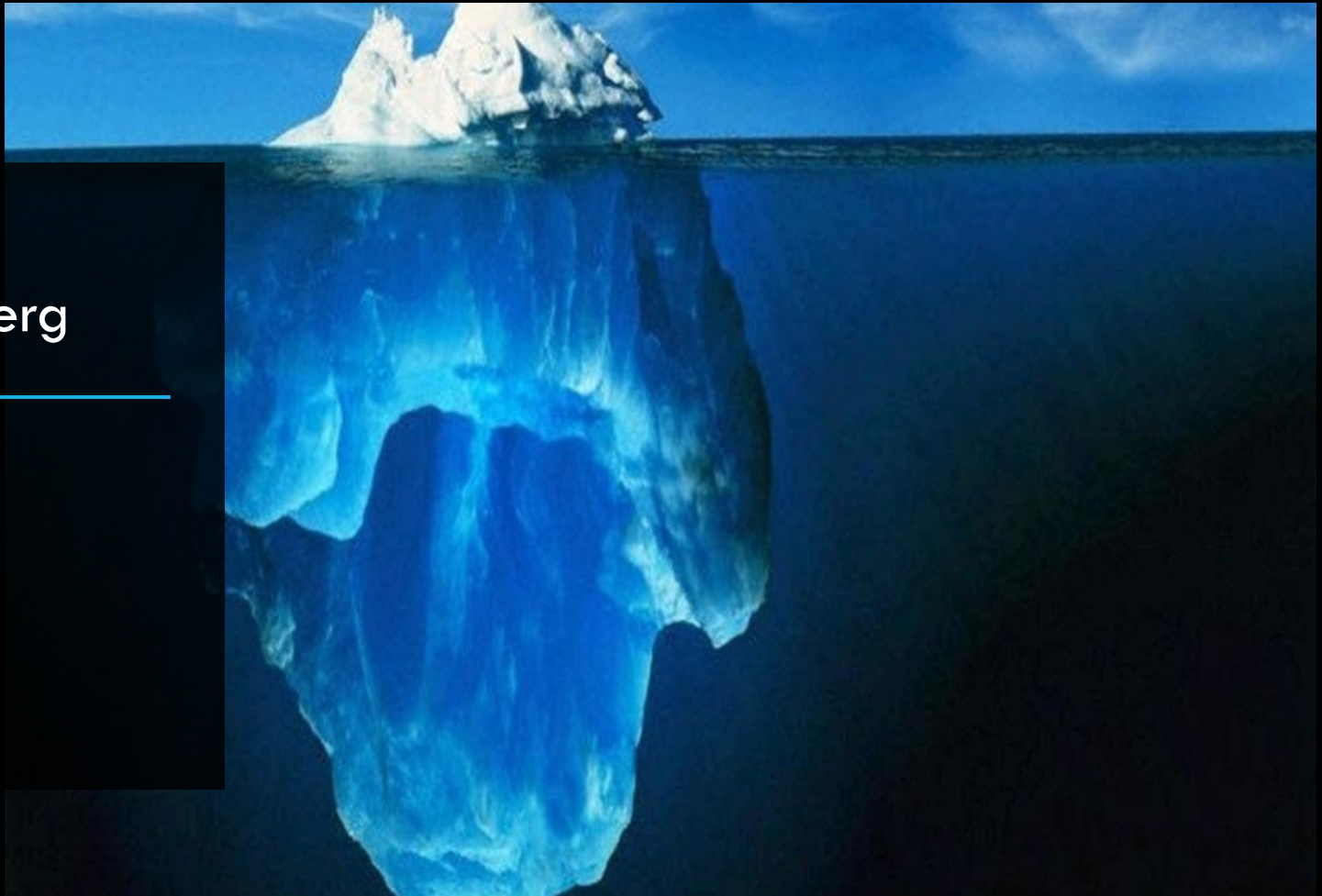


Greenwich & Bexley
Community Hospice



What do you think
the root causes of
VAYP are?





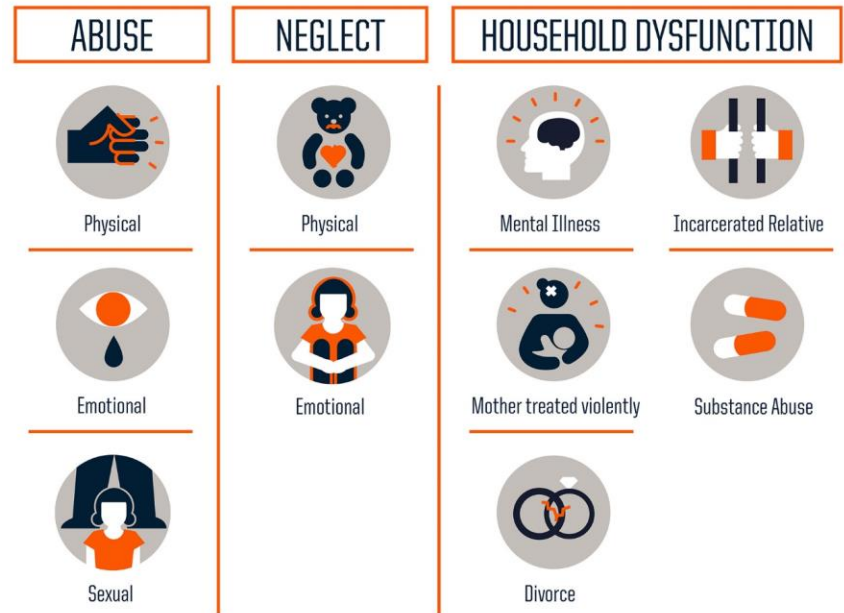
Tip of the Iceberg

What are ACEs ?

The origins of Adverse Childhood Experiences derived from the study conducted in 1995 by the Centres for Disease Control.

The ACE score looks at dual exposure to ten types of abuse.

What is the connection to VAYP?



Life through a lens

Beliefs determine what you see!

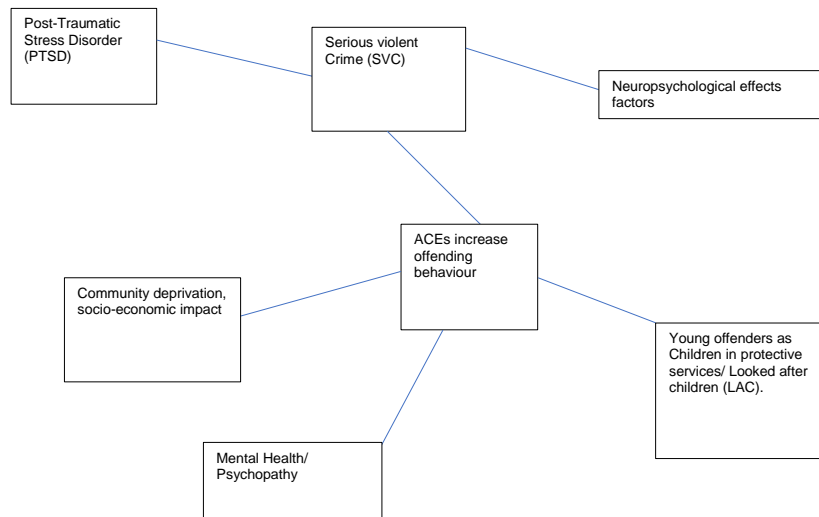
Looking at life through the lens of 'trauma'

Psychosocial views frame our world- views, belief system, cultural influences.

Young people's lives being framed by living in a war zone.



Findings-Thematic Map



VICTIM VS PERPETRATOR



Social Learning Theory - mirroring learnt behavior

The victim becomes the perpetrator

Grief Bereavement & Trauma



80.5% Gang members had someone close to them die grief, bereavement and trauma is suffered because of the committal of SVC and the trauma of incarceration

Complicated grief/ unresolved trauma

Post Traumatic Stress Disorder/ undiagnosed mental health

POLICE LINE DO NOT CROSS



Neuropsychological Effects

ACEs affect the developmental functioning of adolescents, such as chromosome damage and functional changes to the developing brain.

'Avoidance of pain is the biggest defense mechanism'

Community Deprivation



Social disorganization

Survival of the fittest

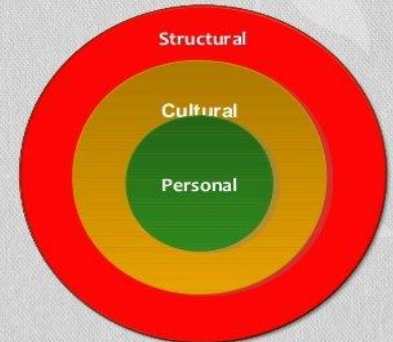
The broken society - deep rooted causes of inequality

PCS (Personal Cultural Social) Model

The PCS model as defined by Thompson (2005), links personal experience, beliefs and attitudes with the wider social group, and places it in the overall context of society. It recognises that discrimination is not just an individual issue, but is also present within cultural and social structures and networks.

PCS Analysis (Thompson, 2003)

- Discrimination and oppression operate at different levels
- These levels are interrelated
- Some elements are overt and visible – other features of oppression can be more invisible or covert
- Effective action to promote equality and diversity relies on thinking and action at all levels



Are we part of the problem?

Payne (2005) defined discrimination as a ‘...means of identifying individuals and groups with certain characteristics and treating them less well than people or groups with conventionally valued characteristics’.

‘The vast and deep injustices some groups suffer as a consequence of often unconscious assumptions and reactions of well meaning people in ordinary interactions, media, and cultural stereotypes, and structural features of bureaucratic hierarchies and market mechanisms—in short, the normal processes of everyday life’.

Looking at ourselves- Anti-oppressive practice, intersectionality and personal values

Effective response

'The prevention is cure approach'



Moving towards a public health approach

Moving towards more therapeutic approaches

Collaborative/ collective working amongst NGOs and statutory agencies.

Trauma informed practice/ projects

Looking at county lines, gangs, CCE/CSE through the lens of a trauma informed approach.

Reflections on the Process

My Personal reflection on this process

Past Traumas that affect our view of VAYP

Looking at self/ Looking after self – how we perceive the world- becoming a reflective practitioner

Conclusion

PEOPLE WILL FORGET
WHAT YOU SAID,
PEOPLE WILL FORGET
WHAT YOU DID,
BUT PEOPLE WILL
NEVER FORGET
HOW YOU MADE
THEM FEEL

MAYA ANGELOU

Round table discussion and exploration

Sarah Morton, Natasha Bested-parker,
Rui Octavia, Tim Owen, Emma
Wildsmith, Sabrina Cleary



The Young Peoples Fund: Questions & Answers

Harriette Tillott (LCF), Sabrina Cleary (Peabody) & Sarah Morton (Peabody)



Feedback on today's event

www.menti.com

Code- 1348 4082



Partner with Peabody

Peabody are keen to partner with organisations that could benefit our residents. We have the following resources that we can use to support our partners' work.

- 73 community buildings
- Volunteers with a wide range of skills from finance to project management
- A range of grants for you and your beneficiaries
- A range of Youth Social Action programmes
- A range of employment and enterprise programmes
- Local and Pan London teams



Contacts

LCF

P: 020 7582 5117

E: info@londoncf.org.uk

Peabody

E: communitygrants@peabody.org.uk

